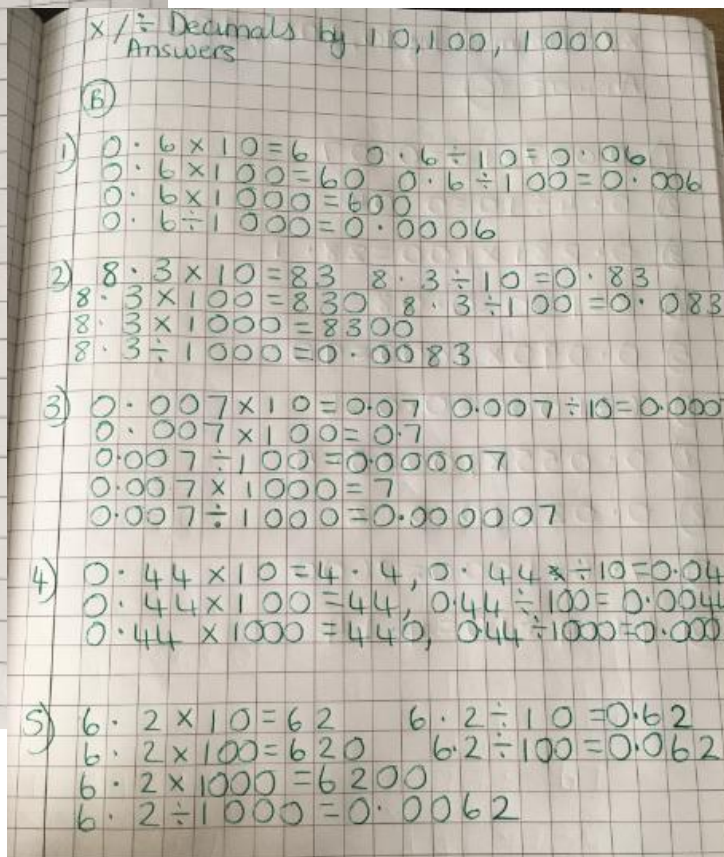
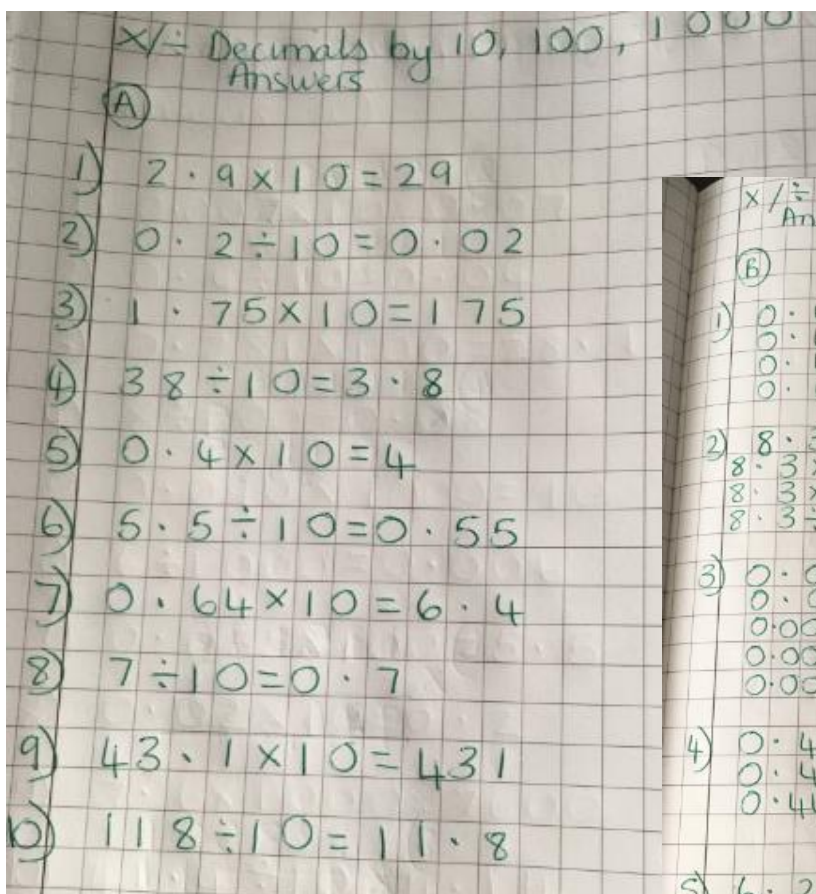


Wednesday 8th July 2020

Multiplying and dividing by 10, 100 and 1000



Section C

- 1) $0.7 \times 10 = 0.07$
- 2) $0.4 \div 10 = 0.04$
- 3) $0.281 \times 100 = 28.1$
- 4) $8 \div 100 = 0.08$
- 5) $0.09 \times 1000 = 90$
- 6) $6 \div 1000 = 0.006$
- 7) $0.055 \times 100 = 5.5$
- 8) $0.02 \times 10 = 0.2$
- 9) $7.6 \times 1000 = 7600$
- 10) $41.4 \div 10 = 4.14$